

WATER SYSTEM ORDINANCE

1. AUTHORITY

- 1.1 This regulation is adopted by the Village District of Eidelweiss Board of Commissioners pursuant to RSA 52:1 and RSA 38.

2. PURPOSE

- 2.1 Provide a continuous supply of drinking water to the residents of the Village District of Eidelweiss (VDOE) in accordance with the Safe Water Drinking Act and New Hampshire RSA's 38 and 485 and the administrative rules of the NH Department of Environmental Services.
- 2.2 Regulate connections to and expansion of the VDOE water system to ensure adequate supply of water to existing and future customers.
- 2.3 Follow the recommendations of the Water System Master Plan developed in 2005.
- 2.4 Prevent physical and environmental damage to the water system.
- 2.5 Provide a fair system of determining water fees for users of the VDOE Water System.
- 2.6 Provide an ordinance that can be enforced by local officials.

3. REGULATION

3.1 WATER CONNECTION

- 3.1.1 An Application for hook up or connection to the VDOE Water System shall be made on a form approved by the Board of Commissioners. The Application must be signed by the property owner(s).
- 3.1.2 Applications must include a copy of the septic design approved by the **NH** Department of Environmental Services, an approved VDOE driveway permit (construction), and a certified plot plan.
- 3.1.3 The Water Connection Fee will be \$18,000 as adopted at the 2026 VDOE annual meeting. In addition to the \$18,000 base fee, applicants applying to connect to the system will also be responsible for extra costs above a standard connection. A standard connection will be defined as having a

water main passing in front of the subject property. These extra costs will include (but are not limited to:)

- 3.1.3.1 Extension of water lines to the furthest boundary line of the subject property if other buildable lots exist beyond the subject property. The VDOE will determine how far a water line needs to be extended if there are any questions.
- 3.1.3.2 Blasting of ledge or other extraordinary excavation situations.
- 3.1.3.3 Replacement of paving on paved roads.
- 3.1.4 Each Water System Connection application will be individually considered for its effect on the existing water delivery system. The following considerations will apply:
 - 3.1.4.1 In the sole discretion of the Village District of Eidelweiss, connections may be approved for properties on Class VI roads which meet all other requirements for development of properties on Class VI roads. Such connections will only be approved if water lines already exist on the road and all other connection requirements set forth in this ordinance are met. Any such approval will be conditioned upon the property owner agreeing to maintain the Class VI Road to a standard satisfactory to the Village District which will allow the maintenance of the water lines. That maintenance agreement will be recorded at the Carroll County Registry of Deeds. Maintenance of the Class VI Road will be at the property owners' sole expense, although owners of properties which are later connected to the water system will be required to share that expense. Failure to maintain the Class VI road to the agreed standard will result in the water supply being turned off. To have water service restored, the full annual fee must be paid, as well as a service reconnecting fee of \$100.
 - 3.1.4.2 Connections will not be approved if the VDOE water system cannot deliver 35psig to the upper floor shower under projected system peak flow conditions. This will be determined by engineering calculations and or residual pressure tests made and recorded in the field at the affected portions of the system. The applicant will provide the VDOE with a site plan and architectural drawings of their proposed building, so a determination

of the elevation of the upper floor shower can be determined.

3.1.4.3 Connections will not be approved in areas where such connections will cause degradation of service to existing customers. Degradation of service as applied to this ordinance is loss of water pressure to existing connections that reduce pressure to less than 35 psi. The particular proposed connection will be evaluated by the VDOE engineer. The engineer may call for specific tests on the system to ensure conditions for connection are satisfactory. The engineer may utilize any existing hydraulic modeling to determine suitability for connection. The engineer will make recommendations to the VDOE Board of Commissioners. No Connections will be made to the VDOE water system to deliver water to any water system or property outside of the District's boundary.

3.1.4.4 The evaluation of the connection application and determination of approval or denial will be made by the VDOE Board of Commissioners.

3.1.4.5 Water connections will not be made during the period November 1 to May 1, except at the discretion of the VDOE Board of Commissioners. Applications for water system connections must be submitted by October 1 if the connection is to be made in that year.

3.1.4.6 The water service to the house will comply with the requirements of Section 3.4. All houses must comply to these requirements by August 1, 2008.

3.2 WATER SERVICE CHARGES

3.2.1 The annual water service fee will be calculated by dividing the sum of the annual budgeted expense and any Board of Commissioners approved contingency funding of the water system divided by the number of users to the system. This fee will be calculated each year and shall be billed for a due date of May 1. Each residence, dwelling unit or property with a curb stop valve, serviced by the water system, or that has water service available to it, including those vacant lots or residences which have requested a curb stop valve which has been installed but not yet turned on the water service and those to which water service has been shut off for

non-payment, will be considered a user. The owner of the property will be responsible for payment of the fee(s).

- 3.2.2 This fee will be an annual fee and not pro-rated. However, the fee will be prorated on a monthly basis for initial connections to the system.
- 3.2.3 Seasonal water turn on will be available at a cost of \$65 per household (if completed). The work will be done on the first Friday of May. You must schedule this by the second Friday of April. Seasonal turn off will be available at a cost of \$65 per household (if completed). The work will be done on the first Monday of November. You must schedule this by the second Friday of October. Failure to be present at a scheduled water turn on or turn off will result in a \$100 fine. If a water turn on or turn off is performed on any other day than the day listed above, the property owner will be billed the actual expense billed by the water operator to the VDOE.
- 3.2.4 Turn off or turn on of water service at the request of the user except as outlined in Section 3.2.3 will be charged the actual costs incurred by the VDOE.
- 3.2.5 Non-Water System required emergency turn off or turn on service will be charged the actual costs incurred by the VDOE with a minimum charge of \$65.

3.3 SERVICE LINE CONNECTION

- 3.3.1 The property owner shall install and be responsible for maintaining the house service waterline from the curb stop to the house shut off in accordance with District, State and Federal regulations.
- 3.3.2 The location of the service line shall be approved by the Water System Operator or other person designated by the Board of Commissioners. Per New Hampshire Department of Environmental Services requirements, the water system service line shall be no closer than 25 feet from any component of the septic system. To further extend that requirement the Village District of Eidelweiss will require a minimum of 25 feet from the lot line to the closest edge of the septic system.
- 3.3.3 Service line shall be a one inch 200 psi CTS (copper tube size) plastic tubing or equivalent. All valves and fittings shall be 200 psi rated. Additionally, it will be required that the entire service line is sleeved.
- 3.3.4 Laying of pipe and fittings shall be in accordance with the requirements of AWWA specifications and as specified herein.

- 3.3.5 Minimum depth of bury for waterlines shall be 6 feet.
- 3.3.6 Pipe shall be laid in the dry and at no time shall water in the trench be permitted to flow into the pipe.
- 3.3.7 For non-metallic pipe, marking tape shall be installed the length of the pipe and at a maximum depth of 24 inches.
- 3.3.8 Pipe shall be laid with 6" screened sand under pipe and 18" over pipe and compacted every 12 inches of depth. No debris, rubble organic matter, muck or rock materials shall be used.
- 3.3.9 Before backfilling, the installation of the service line shall be inspected and approved by the Water System Operator or other person designated by the Board of Commissioners.

3.4 HOUSE CONNECTION

- 3.4.1 The service line shall be terminated inside the house as shown in Figure 1.

FIGURE # 1
Interior Valve Placement

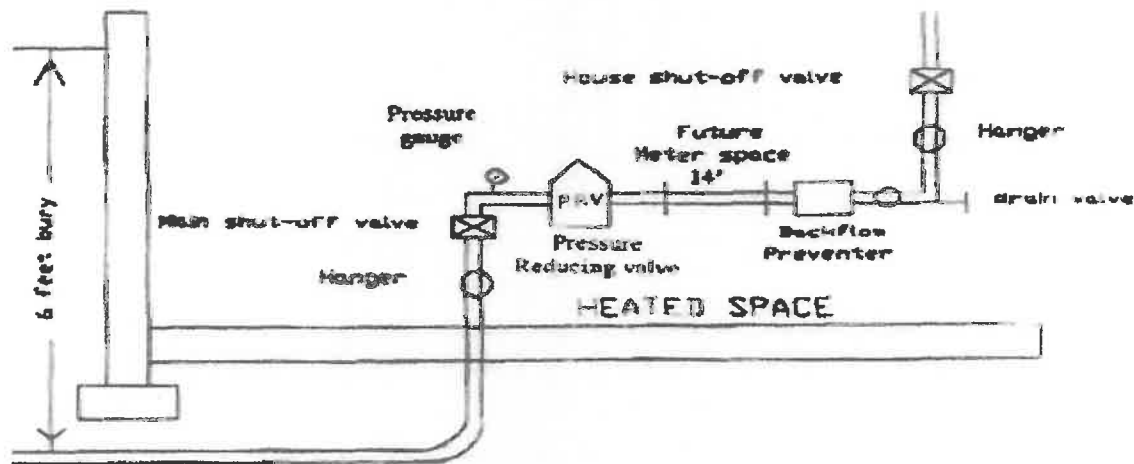
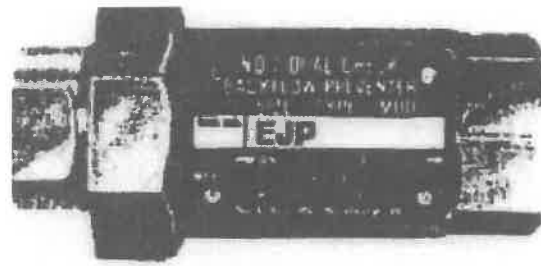


Figure 1 - House Connection

- 3.4.2 A good quality brass ball valve installed, followed by a 4 ½" round 0-160psig pressure gauge, then a pressure reducing valve is highly recommended, followed by a #7 dual check backflow preventer or equivalent which must be installed (Figure 2). The piping configuration shall be inspected and approved by the Water System Operator or other person designated by the Board of Commissioners prior to turning the water on.

Figure 2 - Dual Check Backflow Preventer



#7 Dual Check Backflow Preventer

Series 7 straight line poppet type construction minimizes pressure drop and provides smooth flow characteristics. It is not adversely affected by normal line pressure surges, will not cause water hammer and operates without chatter or vibration. It can be installed horizontally or vertically. Tested and certified to meet or exceed the 1988 revision of ANSI/ASSE Standard 1024 for "Dual Check Valve Type Backflow Preventers."

4. ENFORCEMENT

- 4.1 This ordinance is enforceable by the VDOE Commissioners and legally appointed law enforcement officers

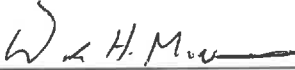
5. PENALTY

- 5.1 Any violation of this connection portion of this ordinance will render any connection privileges void. Any person who violated this ordinance shall be deemed to have violated an ordinance of the Village District of Edelweiss and may be fined up to \$10,000 per day for such violation.
- 5.2 Water service charges include all Water User Fees, late fees, and all fees resulting from turning on or off the water supply. Failure to pay any Water Service Charges within 90 days of the due date will result in having the water supply turned off. To have water service restored any and all outstanding fees and penalties must be paid as well as a service reconnecting fee of \$100 and all applicable late charges. Late charges will accrue at a rate of \$50 after the due date indicated on the billing statement, \$100 after 90 days and \$10 per month until paid.
- 5.3 Unauthorized tampering with the water system or the use of materials that do not meet specifications shall constitute a violation of this ordinance and may be fined up to \$10,000 per day for such violation.

6. AMENDMENTS

6.1 The Board of Commissioners may amend this ordinance as the need arises.

Adopted May 21, 2007 following a Public Hearing on May 11, 2007.
Revised following a Public Hearing on August 17, 2007.
Revised following a Public Hearing on July 21, 2008.
Revised following a Public Hearing on May 11, 2009.
Revised following a Public Hearing on December 14, 2009.
Revised following a Public Hearing on October 4, 2011.
Typographical errors corrected following a Public Hearing on October 26, 2013.
Revised following a Public Hearing on May 24, 2014.
Revised following Public Hearing on December 28, 2018
Revised following a Public Hearing on June 1, 2019
Revised following the Annual Meeting on March 5, 2022
Revised following a Public Hearing on May 14, 2022
Revised following the Annual Meeting March 7, 2026


Wooda McNiven
Board of Commissioners


Mark Graffam


Nancy Cole